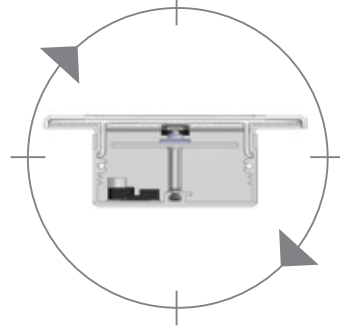


■ FLUSHLINE SERIES (CXLED)

- LED ambulance light
- Interference free circuit
- Light output to latest standards
- Dimmable to 50% brightness
- LED trauma light option

Internal View

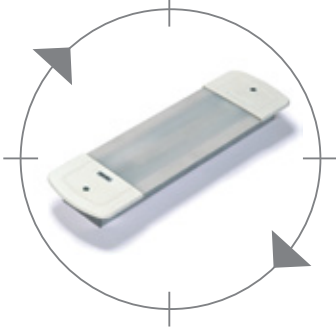


|| See technical specs overleaf >>>

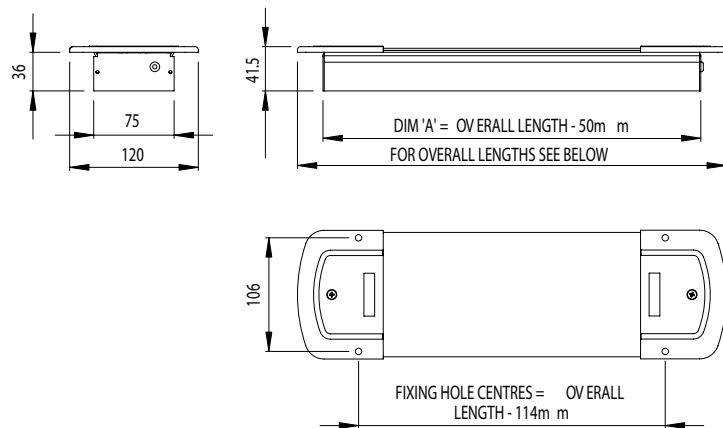
REV 0



FLUSHLINE SERIES (CXLED)



- LED ambulance light - The CXLED has been designed as the LED solution for ambulances in the UK and Europe. Based on the popular recessed fluorescent design, the LED unit can be easily retrofitted without changing roof design or wiring.
- Interference free circuit - The circuitry has been specially designed to suit the automotive industry. The LED driver uses components which eliminate electrical noise.
- Light output to latest standards - The high power LEDs used in the CXLED range provide more than enough light to meet the latest industry standards.
- Dimmable to 50% brightness - The light can be dimmed to 50% brightness (each LED dims to 50% brightness rather than switching off half the LEDs).
- LED trauma light option - A blue LED strip, which can be switched independently, is included in trauma versions.



OVERALL LENGTHS : CXLED6-3MV= 400mm CXLED36-0.5 = 1085mm

Specification

ALL DIMENSIONS HAVE A TOLERANCE OF +/- 1mm

FLUSHLINE (CXLED)

		CXLED 36-0.5D	CXLED 36-0.5DT	CXLED 6-3MV
Supply Voltage	VDC	12	12	-
Voltage Range	VDC	10-15	10-15	10-32
Average Current	A	1.98	1.98 (non-trauma)	12V = 1.5A 24V = 0.75A
Light Output	lm	972	972 (non-trauma)	>1050
LED Power	W	18	18 + 3.3 (trauma)	15
Weight	kg	1.73	1.75	0.45
Temp. Range	°C	-10 to +40	-10 to +40	-20 to +40